

Made in Italy  
PRODUCT

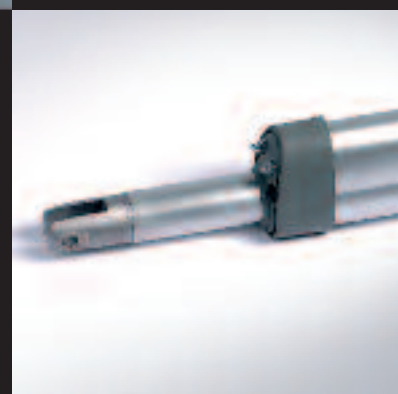
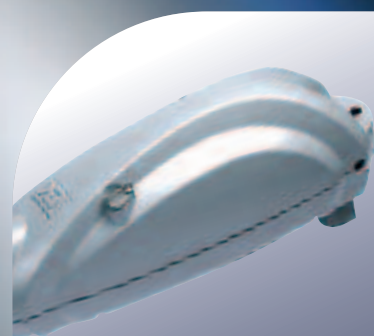


DEA®



SWING

DEA



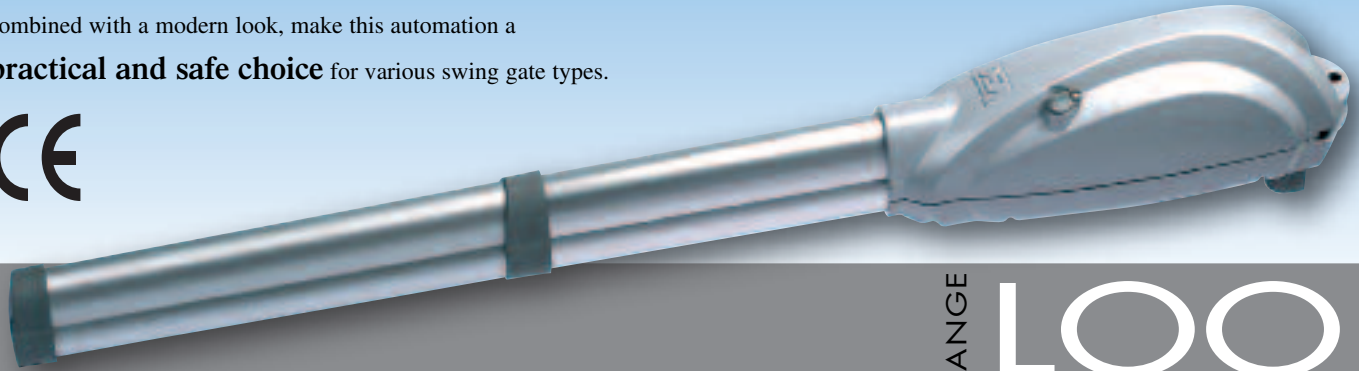
LOOK

Electromechanical linear ram for swing gates



LOOK is the new telescopic electromechanical ram for leafs up to 2,5 m or 3,8 m long.

Reliability, strength and functionality, combined with a modern look, make this automation a practical and safe choice for various swing gate types.



RANGE LOOK

**For leafs up to 2,5 m**

- LOOK 350: operator stroke 320mm, 230V ac, without rod cover.
- LOOK 351: operator stroke 320mm, 230V ac, with rod cover.
- LOOK 352: operator stroke 320mm, 230V ac, with rod cover and limit switches in open and close.
- LOOK 353: operator stroke 320mm, 230V ac, with rod cover. Not self-locking.
- LOOK 354: operator stroke 320mm, 230V ac, with rod cover and limit switches in open and close. Not self-locking.
- LOOK 351EN: operator stroke 320, 230V ac, with rod cover, encoder and 1 mt. power supply cable

**For leafs up to 3,8 m**

- LOOK 355: operator stroke 520mm, 230V ac, with rod cover.
- LOOK 356: operator stroke 520mm, 230V ac, with rod cover and limit switches in open and close.
- LOOK 357: operator stroke 520mm, 230V ac, with rod cover. Not self-locking.
- LOOK 358: operator stroke 520mm, 230V ac, with rod cover and limit switches in open and close. Not self-locking.
- LOOK 355EN: operator stroke 520, 230V ac, with rod cover, encoder and 1 mt. power supply cable

**For solutions in low voltage\***

- LOOK 371: operator stroke 320mm, 24V dc, with rod cover. For leafs up to 2,5 m.
- LOOK 372: operator stroke 520mm, 24V dc, with rod cover and limit switches in open and close. For leafs up to 2,5 m.
- LOOK 373: operator stroke 520mm, 24V dc, with rod cover. For leafs up to 3,8 m.
- LOOK 374: operator stroke 520mm, 24V dc, rod cover and limit switches in open and close. For leafs up to 3,8 m.

*\*the automation in 24V DC enables programmable limit switches, final slow-down in opening / closing and reverser function on obstacle; moreover a battery backup system enables the operation in case of power failure.*

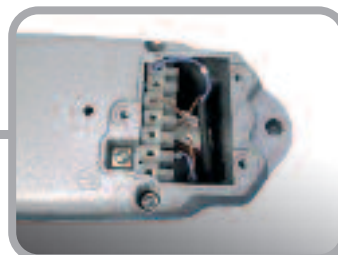
*The DEA System control boards are planned to optimize the performances of LOOK range. It is suggested to use control boards with electronic force adjustment: 202RR/C and 212E/C (230V ac) or 224RR/C (24V dc).*

The models

- Electromechanical automation, 230V ac and 24V dc.
- Available in 2 lengths, stroke 320 or 520 mm, for leafs up to 2,5 or 3,8 m long.
- Simple and safe manual unlocking device by special key.
- Limit switches in open and close, easy to adjust.
- Internal electrical terminals, to make easier and faster the wiring of motor and limit switches.
- Incorporated condenser.
- Rear fastening plate with several holes, for an easier fixing.

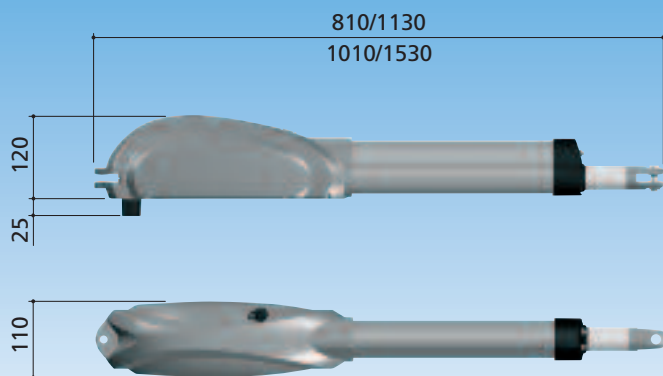


*Rapid unlocking system.*



*Internal terminal board for an easier connection of the operator and limit switches*

# KIT



**IDEAKIT LOOK**  
Complete automation  
with DEA original accessories.

## Technical information

Model	350 - 351 - 352 351EN	353 - 354	355 - 356 355EN	357 - 358	371 - 372	373 - 374
Single phase power supply (50Hz)	230 V a.c.	230 V a.c.	230 V a.c.	230 V a.c.	24 V d.c.	24 V d.c.
Motor power supply (V)	230 V a.c.	230 V a.c.	230 V a.c.	230 V a.c.	24 V d.c.	24 V d.c.
Capacity (W)	300	300	300	300	60	60
Built-in capacitor (µF)	8	10	8	10	-	-
Duty cycle	40%	40%	40%	40%	40%	60%
Max thrust (N)	1650	1200	1650	1200	1000	1000
Speed (mm)	320	320	520	520	320	520
Rod exit speed (cm/sec)	1,6	2,0	1,6	2,0	1,75	1,75
Weight with packing (Kg)	9	9	9,5	9,5	9	9
Working limit temperature (°C)	-20 ÷ 40	-20 ÷ 40	-20 ÷ 40	-20 ÷ 40	-20 ÷ 40	-20 ÷ 40
Protection degree	IP 34	IP 34	IP 34	IP 34	IP 34	IP 34

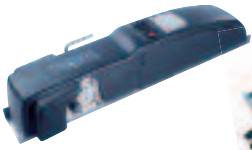


**DEA**

www.deasystem.com

Sectional and garage doors

LIVI 902



SPAZIO



LIVI 800 C



LATO

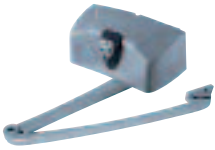


LIVI 550PL



Swing gates

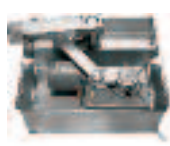
LIVI 500



ANGOLO



GHOST 200



OLI 600



WING 302



LOOK



Sliding gates

LIVI



GULLIVER



Electromechanical barriers

PASS



STOP



Roller shutter

WILL



the products

the accessories



**Digikey:**  
Safe and reliable,  
available wireless  
and hard-wired.



**Safety beams:**  
reliable and easy  
to install.



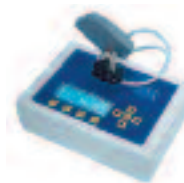
**Control boards:**  
230V a.c. e 24V d.c.,  
exact and simple  
programming.



**Flashing light**  
with built-in  
433,92 Mhz  
aerial.



**Radio Devices:**  
Frequency 433,92 Mhz  
Rolling Code  
or cloneable



**Programming keyboard for**  
transponder and wireless  
transmission systems; it allows  
you to personalize installations  
with fitter/installation codes.



**DEA SYSTEM S.p.A.**  
Automation for gates, doors and barriers  
Via della Tecnica, 6  
36013 PIOVENE ROCCHETTE (VI) - ITALIA  
Telefono: + 39 0445 550789 - Telefax: + 39 0445 550265  
www.deasystem.com - deasystem@deasystem.com

DEALER STAMP



ISO 9001 certified company  
Certificate n. 50 100 5350